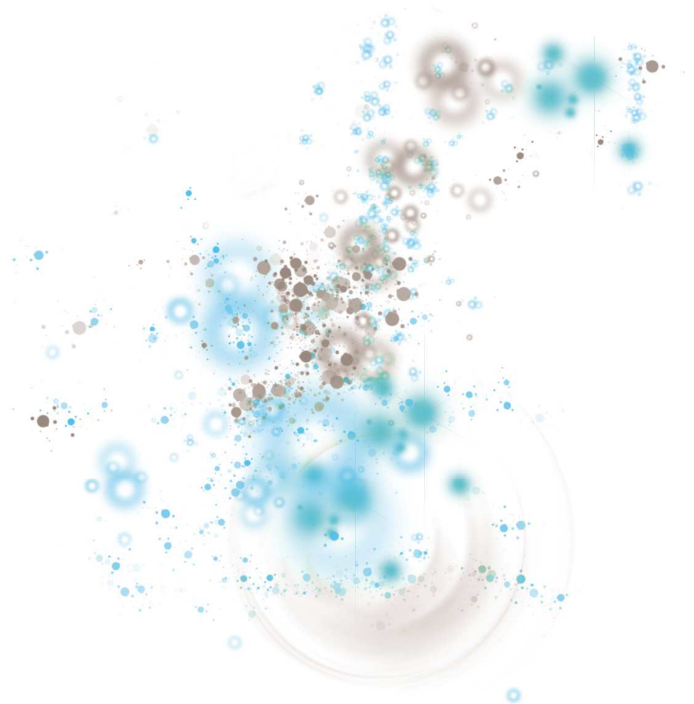


LUXEPACK

MONACO

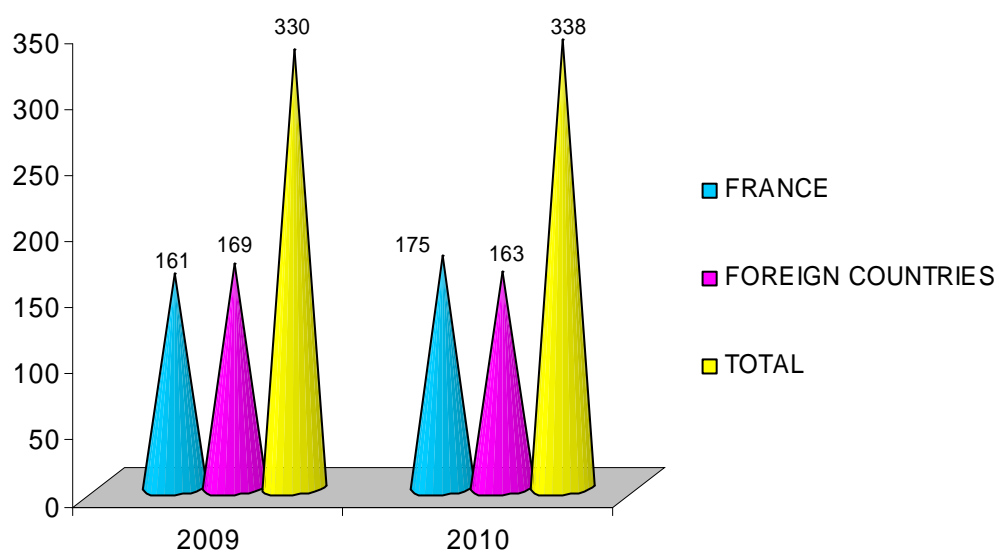
20.21.22
Octobre 2010
Grimaldi Forum - Monaco

STATISTIQUES / REPORT 2010



STATISTIQUES EXPOSANTS / EXHIBITORS

	2009	2010
FRANCE	161	175
FOREIGN COUNTRIES	169	163
TOTAL	330	338



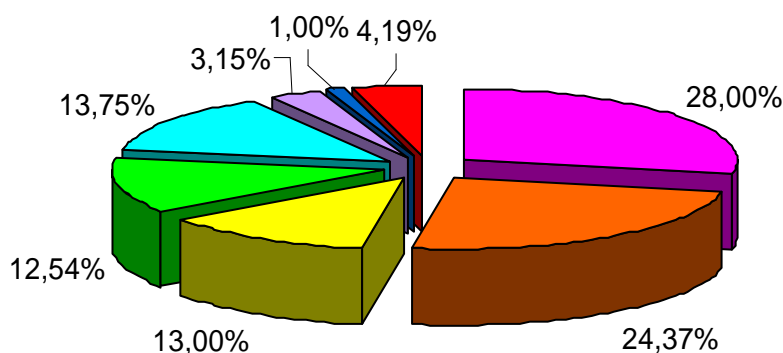
94 % des exposants ayant retourné l'enquête de satisfaction envisagent de renouveler leur participation en 2011. Parmi eux :
90 % jugent la qualité des visiteurs bonne à très bonne

94% of the exhibitors who sent back the after show evaluation already plan to return to Luxe Pack in 2011. Among them:
90% say that quality of visitors was good to very good

REPARTITION DES VISITEURS PAR FONCTION / DISPATCH BY VISITOR'S POSITION

	2009	2010
PDG, DG, GERANT <i>PRESIDENT, GENERAL MANAGER</i>	25%	28%
MARKETING, COMMUNICATION	22,80%	24,37%
COMMERCIAL SALES	14%	13%
ACHATS <i>PURCHASING</i>	11,40%	12,54%
RECHERCHE ET DEVELOPPEMENT <i>R&D</i>	13,20%	13,75%
PRODUCTION, TECHNIQUE <i>PRODUCTION / TECHNICAL DEPARTMENT</i>	4,70%	3,15%
ADMINISTRATION	3%	1%
AUTRES <i>OTHERS</i>	5,90%	4,19%

VISITEURS PAR FONCTION / DISPATCH BY VISITOR'S POSITION

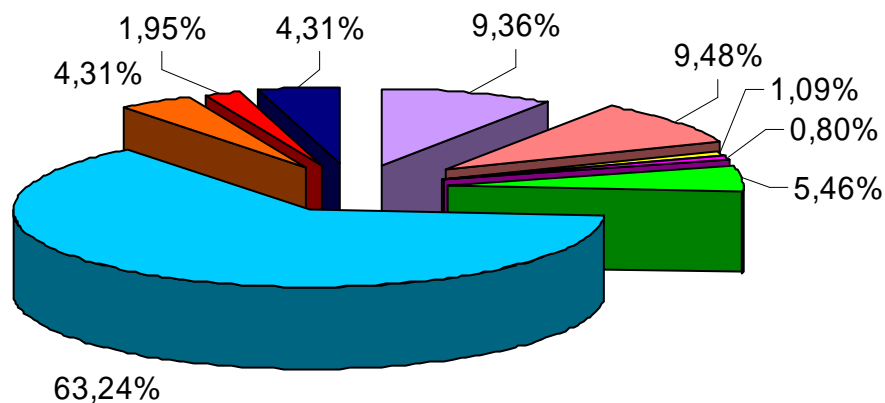


- PDG, DG, GERANT / PRESIDENT, GENERAL MANAGER
- MARKETING, COMMUNICATION
- SALES
- PURCHASING
- R&D
- PRODUCTION / TECHNICAL DEPARTMENT
- ADMINISTRATION
- OTHERS

REPARTITION PAR MARCHE / DISPATCH BY MARKET

	2009	2010
MAISONS DE LUXE ET AUTRES UTILISATEURS D'EMBALLAGES <i>LUXURY COMPANIES AND OTHER PACKAGING USERS</i>	56,10%	56,20%
SERVICES	18,00%	18,10%
FABRICANTS D'EMBALLAGES ET FOURNISSEURS <i>PACKAGINGS MANUFACTURERS AND SUPPLIERS</i>	18,00%	23,30%
NON RENSEIGNE <i>NO GIVEN INFORMATION</i>	7,90%	2,40%

REPARTITION 2010 PAR MARCHE DU LUXE / DISPATCH BY LUXURY MARKET



NOMBRE DE JOURS DE VISITE / NUMBER OF VISITING DAYS



STATISTIQUES VISITEURS / VISITORS FIGURES

REPARTITION GEOGRAPHIQUE / GEOGRAPHICAL DISPATCH

	2009	2010
FRANCE	2665	2634
FOREIGN COUNTRIES	3256 55%	3092 54%
TOTAL	5921	5726 (- 3,3%)

VISITEURS FRANCAIS / FRENCH VISITORS

	2009	2010
ILE DE FRANCE + PARIS PARIS + REGION	38%	37%
PACA SOUTH EAST	28%	30%
RHONE ALPES	8%	8%
AUTRES OTHERS	26%	25%

VISITEURS INTERNATIONAUX / FOREIGN VISITORS

	2009	2010
FRANCE	45,00%	46,00%
ITALIE ITALY	19,00%	20,70%
AUTRES PAYS D'EUROPE OTHER EUROPEAN COUNTRIES	29,00%	26,50%
GRAND EXPORT REST OF THE WORLD	7,00%	6,80%

QUELQUES VISITEURS LUXE PACK MONACO 2010...
PART OF THE VISITORS AT LUXE PACK MONACO 2010...
(non exhaustive list)

ACF CHOCOLATES DE FRANCE; ACQUA DI PARMA; ACQUA DI STRESA; AJMAL PERFUMES; AL JAZEERA PERFUMES; ALAIN AFFLELOU; ALLIANZ; ALPEN EDITIONS; ANNAYAKE; ANNE CAMILLI & CIE; ANNICK GOUTAL PARFUMS; ARBORESENS; ARC INTERNATIONAL; ARKOPHARMA; ARMADIS; ARNAUD DE BONTIER; AROMATHERAPY ASSOCIATES; AVON COSMETICS LTD; BABYLISS; BACARDI MARTINI; BEAU MONDE; BEAUTÉ PRESTIGE INTERNATIONAL; BEIERSDORF AG; BENETTON; BERKELEY SQUARE COSMETICS LONDON; BIO LABORATOIRES P.M. ; BIODERMIC; BIOMED GMBH; BIORGANICPHARMA; BISQUIT DUBOUCHÉ ET CIE; BLC THALGO COSMETIC SA; B; BLUCACHEMIRE; BOTICÁRIO; BOURJOIS; BRITISH AMERICAN TOBACCO; BROCARD PARFUMS GMBH; BULGARI PARFUMS & COSMÉTIQUES SA; BURBERRY; BY TERRY; CALVIN KLEIN; CAMUS COGNAC; CANDELICIOUS; CARAN D'ACHE; CARITA; CARTIER PARFUMS; CAUDALIE; CAVALIN DISTILLERIE SAS; CHAMPAGNE BILLECART-SALMON; CHAMPAGNE BRIMONCOURT; CHAMPAGNE DUVAL-LEROY; CHAMPAGNE ROEDERER; CHAMPAGNES P&C HEIDSTECK; CHANEL PARFUMS BEAUTE; CHARRIER PARFUMS; CHATEAU DE BERNE; CHATEAU VANNIERES; CHOCOLATERIE DE PUYRICARD; CHOCOLATERIE VALRHONA; CHOPARD; CHRISTIAN DIOR; CLARINS; CLINIQUE; CLS REMY COINTREAU; COFINLUXE; COLINE PARFUMS; COMPTOIR PROVENÇAL DES ARGILES; COMTESSE DU BARRY; CONFISERIE FLORIAN; CONFISERIE FRAINE; CORYNE DE BRUYNES; COTY PRESTIGE; COURVOISIER; CREATIONS HENRY JACQUES; CRISTALLERIES SAINT-LOUIS; CRYSTAL ET BRONZE; DE RUY PERFUMES SA; DEBORAH GROUP; DECLEOR - CARITA; DEE JEE FASHION TRADING AB; DESSANGE INTERNATIONAL; DIAGEO; DIESEL / YVES SAINT LAURENT BEAUTÉ; DIOR; DISTILLERIE GAUTHIER; DISTILLERIE MEYER; DISTILLERIE NEISSON; DISTILLERIES ET DOMAINE DE PROVENCE; DIVINA AND CO; DOLCE&GABBANA; DOM PERIGNON; DOMAINE DE LA CHAPELLE ST JEROME; EDITIONS DE PARFUMS FREDERIC MALLE; ELIZABETH ARDEN; ESTEE LAUDER; ETOILE MEDICALE; EXPRESSIONS PARFUMÉES; FABERGE; FARDEL COSMETICS SA; FAUCHON; FERRAGAMO PARFUMS; FERRERO; FEUILLATTE; FRAGONARD PARFUMEUR; GALIMARD; GALLERIE LAFAYETTE; GIVENCHY; GOURMET EXPERIENCES; GROUPE JACQUES BOGART; GROUPE PANTHER; GROUPE PIERRE FABRE; GROUPE SOTHYS; GROUPE THALGO COSMETIC; GROUPE YVES ROCHER; GUCCI; GUERLAIN; GUINNESS WORLD RECORDS; HENNES & MAURITZ; HENNESSY; HERMES PARFUMS; HOLDING LADOGA; HOLISTICA; IDESA PARFUMS S.A.; IMPERIAL TOBACCO; INTER PARFUMS; INTERCOSMETICA SA; INTERCOSTE; ISABELL KRISTENSEN; IVRESSE DES SENS; J. CORTÈS CIGARS; JACOMO; JACQUES BOGART GROUPE; JARDIN DE FRANCE; JAS HENNESSY; JEAN BOUIS PARFUMEUR; JEANNE ARTHES; JEANNE PIAUBERT; JEHANNE RIGAUD PARFUMS; JOHNSON & JOHNSON; KANEBO COSMETICS INC. PARIS; KARA; KENZO PARFUMS; KERANI; KHORTYTSA; KOS PARIS; KOTO PARFUMS; KRAFT FOODS FRANCE; L' OCCITANE S.A.; L OREAL; LA COLLINE INTERNATIONAL; LA MONNAIE DE PARIS; LA PRAIRIE GROUP; LA SULTANE DE SABA; LABORATOIRE ARILAND; LABORATOIRE BIODERMA; LABORATOIRE DE COMBE D'ASE; LABORATOIRE DELRIEU; LABORATOIRE DENSMORE; LABORATOIRE ENSA; LABORATOIRE LETI; LABORATOIRE RENE GUINOT; LABORATOIRE TEOXANE; LABORATOIRES ARCANA; LABORATOIRES ARKOPHARMA; LABORATOIRES ASEPTA; LABORATOIRES CADENTIA; LABORATOIRES DERMATOLOGIQUES D'URIAGE; LABORATOIRES DEVEDERM - TERRA HUMANA; LABORATOIRES FILORGA; LABORATOIRES INELDEA; LABORATOIRES LETI; LABORATOIRES MULTALER; LABORATOIRES PIERRE FABRE; LABORATOIRES PRODIFAC; LABORATOIRES THERAMEX; LABORATOIRES VITYS; LABORATORIOS VIDAURRE ; LALIQUE PARFUMS; LANCASTER; LAZARTIGUE DIFFUSION; LE BAIN COLLECTION; LE FRUITÉ PROVENÇAL; LE M'YAMISSIME "SECRET ET SAVEUR" SARL; LEGATORIA D'ARTE; LERMIMUM SPIRIT GROUP; LES JARDINS INTERIEURS; LES VINS SKALLI; LES VOLETS BLANCS; LETOILE BEAUTE INTERNATIONAL; LIMOGES DIFFUSION SARL; LINARI GMBH; LIZ EARLE BEAUTY COMPANY; LK DR IRENA ERIS SA; L'OCCITANE; LOGIQUE DE BEAUTE; L'OREAL; L'OREAL USA; LORIENCE PARIS; LORNA MCKAY; LOUIS ROEDERER CHAMPAGNE; LOUIS SIPP ALSACE; LOUIS VUITTON; LOUIS VUITTON MALLETTIER; LUNETTES RÉGÉ & ASSOCIÉS; LUNETTES YVES COGAN; LUXE ISLAND; LUXOTTICA GROUP SPA; LVMH; LVMH - PARFUMS LUXE INTERNATIONAL; M & M FRAGRANCES; MABELLE; MADISON COSMETICS; MADISON PARFUMS; MAKE UP FOR EVER; MANETTI & ROBERTS; MANIFATTURA ITALIANA TABACCO; MARIA GALLAND; MARIANAS; MARIE BRIZARD GROUPE BELVÉDÈRE; MARIONNAUD GROUP; MARKS AND SPENCER; MARTELL & CO; MASCARA PLUS; MATERO; MATHIAS; MAX MARA SRL; MEYNIER; MHD MOËT HENNESSY DIAGEO; MICROCOSMO; MICYS COMPANY; MISAKI; MOET & CHANDON; MOLINARD; MONNAIE DE PARIS; MONTBLANC SIMPLO GMBH; MONTRES DEWITT SA; MORRIS PROFUMI; NATURA; NEMIROFF; NESPRESSO; NESTLÉ; NESTLE SUISSE; NINTENDO OF EUROPE GMBH; NOUGAT LONDON LIMITED; NUTRITION PHARMA; NYCE INTERNATIONAL S.R.L.; OLIVE & PROVENCE; OLIVIER DURBANO; OLIVOS OIL INDUSTRIES; OPALE; O'PARFUM; ORIFLAME COSMETICS; ORLANDI; ORSAN VIGNERONS; P&G PRESTIGE PRODUCTS; PANIER DES SENS; PANINI FRANCE; PARFUM FRANCIS KURKDJIAN; PARFUMERIE FRAGONARD; PARFUMERIE JARDIN DE FRANCE; PARFUMERIES GENERALES PARIS; PARFUMS BERDOUES; PARFUMS CARLO CORINTO PARIS; PARFUMS CARON; PARFUMS CHRISTIAN DIOR; PARFUMS COLINE; PARFUMS D'ANTAN; PARFUMS DE MARQUE; PARFUMS GIVENCHY; PARFUMS HERMES; PARFUMS M MICALLEF; PARFUMS MAVIVE; PARFUMS MOLINARD; PARFUMS PHILIPPE CAPDEVIELLE; PELIKAN; PERFUME HOLDING; PERFUMES LOEWE S.A.; PERFUMES Y DISEÑO; PERNOD RICARD; PHILIP MORRIS; PHYTO-LIERAC / ALES GROUPE; PIAGET HORLOGERIE; PIERRE ANDRE CHATEAU DE CORTON ANDRE; PLACE DES LICES; PRADA PARFUMS; PRESTIGE ST. PETERSBURG; PROCTER & GAMBLE; PUIG PRESTIGE BEAUTE; PUPA; PURE SUISSE LABORATOIRE; REMINISCENCE ; REMY COINTREAU; REMY MARTIN; REVLON; RICARD SA; RICHEMONT INTERNATIONAL SA; RITTER SPORT GMBH & CO. KG; ROYAUME DU PARFUM INTERNATIONAL; SALVATORE FERRAGAMO; SAM MISAKI; SAMSUNG ELECTRONICS; SANPELLEGRINO SPA; SARL HISTOIRES DE PARFUMS; SCHWAN-STABILO COSMETICS; SEPHORA; SFA ROMANI; SHANGAI HERBORIST COSMETICS CO; SHANGHAI JAHWA UNITED CO LTD; SHISEIDO; SISLEY; SKIN TALK COSMETICS; SKYROS INTERNATIONAL; SOCIETE DES BAINS DE MERS; SOTHYS; ST DUPONT; ST JAMES DISTILLERY; SWAROVSKI; TAITTINGER; TERRE D'OC; THALGO COSMETIC; THE ABSOLUT COMPANY; THE FRAGRANCE FOUNDATION; THE GLENMORANGIE COMPANY; THE MILLENIUM ESSENCE COMPANY; THIERRY MUGLER; TOTAL FRAGRANCES; TOUPINE & CABESSELLE; TRADITION ET PARFUMS; ULRIC DE VARENS SA; UNE OLIVE EN PROVENCE; UNILEVER; UNIPAR; VALRHONA; VANILLE ET TRADITION; VERRERIE D'ART ALAIN STEINMETZ; VEUVE CLICQUOT; VICTORINOX; VRANKEN POMMERY; YVES ROCHER; YVES SAINT LAURENT BEAUTE...